

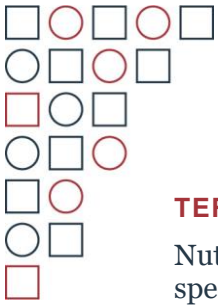
Expression of Interest No: 29th June 2026

Policy and Social Research Specialist

Date of Issue: 29th June 2026

**Deadline for receipt of submissions:
15th July 2026 at 11.59pm Ottawa time**





TERMS OF REFERENCE (ToRs)

Nutrition International is recruiting an individual Consultant to perform the duties specified in this ToR. Nutrition International is committed to the fundamental principles of equal employment opportunity. Women are encouraged to apply.

BACKGROUND AND RATIONALE

The Government of Tanzania is undertaking the development of a National Nutrition Long-Term Plan (NN-LTP) to guide multisectoral efforts to improve nutrition outcomes and strengthen human capital over the next 25 years. The plan will align with Tanzania Development Vision 2050, which aims to transform Tanzania into an upper-middle-income economy by 2050.

Tanzania represents one of the first countries globally to develop a long-term nutrition plan aligned to broader national transformation frameworks, creating a unique opportunity for learning on long-range nutrition governance, systems transformation, and multisectoral policy planning. This research will track the NN-LTP policy process to explain how change happened using public policy theory to explore the issues that drove the process; and embed a 'learning while implementing' approach, generating real-time insights that can inform adaptive decision-making during NN-LTP development, adoption, and early operationalization.

Nutrition International is providing strategic and technical support to the policy development and research process, through a team of in-house experts, complemented by national and international consultants. Nutrition International will recruit a Policy and Social Research Specialist (hereafter 'Research Specialist'), working closely with the Global Governance Advisor, to provide policy research expertise, fieldwork and analysis support in Tanzania.

PURPOSE OF THE CONSULTANCY

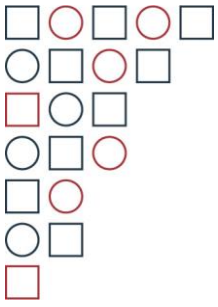
The purpose of this consultancy is to provide on-the-ground research capacity, comprising securing and undertaking key-informant interviews, research workshop facilitation, transcription and translation support, multiple forms of (largely qualitative) data analysis and synthesis, and scientific writing.

The Research Specialist will support the research and learning agenda embedded in the NN-LTP development and implementation process. The work of the Research Specialist will be managed and guided by NI's Global Governance Advisor and bounded by the agreed research plan and Tanzania research ethics boards. The Research Specialist will liaise with in-country partners, including the Tanzania Food and Nutrition Council (TFNC) and Nutrition International.

SCOPE OF WORK AND RESPONSIBILITIES

Working closely with the Global Governance Advisor and in collaboration with the TFNC and Nutrition International, the Nutrition Specialist will undertake the following tasks:

3.1 Support ethical approval and preparatory work



- Support the Global Governance Advisor in identifying and synthesising relevant academic literature to underpin the study
- Support the finalization of the research plan and fieldwork tools, including interview guides, policy matrices and stakeholder mapping workshops
- Lead the submission and securing of ethical approval request to the Tanzanian National Institute for Medical Research (NIMR)
- With the Global Governance Advisor, identify key informants and work to secure interview and workshop participation

3.2 Undertake research fieldwork

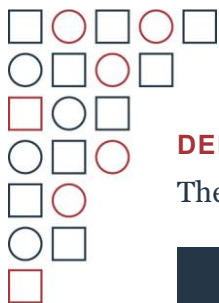
- With the Global Governance Advisor, facilitate a workshop to map and analyse key policy actors, guided by the research plan
- Undertake 20-30 key informant interviews with policy actors identified through the network mapping and broader sampling strategy outlined in the research plan
- Undertake AI-assisted transcription (and translation from Swahili to English where necessary) of interview transcripts, and proper management of audio and text files as specified in the research plan and ethical approval guidelines

3.3 Undertake data analysis and synthesis

- Lead the qualitative analysis (thematic coding) of interview transcripts, and with the Global Governance Advisor the identification of patterns, themes and findings
- With the Global Governance Advisor, participate in synthesis across the multiple data sources within the study to identify key findings
- With the Global Governance Advisor, support the writing of academic papers, policy briefs, and public-facing communications to disseminate the findings to different audiences

3.4 Project coordination and dissemination

- As necessary, liaise with project partners to ensure the research is aligned with policy development timelines and needs
- As necessary, feed key research findings into policy processes through writing briefs, attending meetings or briefing partners (in line with confidentiality mandated with ethical approvals)
- As necessary, attend (online) meeting with the Global Governance Advisor and other NI staff



DELIVERABLES

The Research Specialist will submit the following key deliverables:

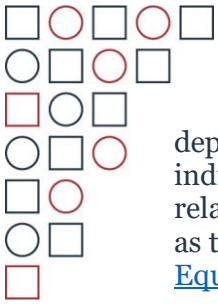
Deliverable	Description	Date
1. Ethical approval	Final ethical approval certification from the Tanzanian National Institute for Medical Research (NIMR), after addressing any comments or recommendations from the Institute	August 15, 2026
2. Interviewee and workshop participant lists	Final list of interviewees and research workshop participants, agreed with the Global Governance Advisor, in a suitable format with a decoding process for anonymization of transcripts	August 15, 2026
3. Interview transcripts	Final set of all transcripts in English, checked and approved for language, and anonymized and de-identified	October 30, 2026
4. Coding framework	Final coding framework for interview analysis, agreed with the Global Governance Advisor, and loaded into appropriate qualitative data analysis software	October 30, 2026
5. Final database of coded interviews	Final coding file from appropriate qualitative data analysis software, agreed with the Global Governance Advisor, containing full coding and analysis of all interview transcripts	December 15, 2026
6. Final analysis report	Final report of no more than 20 pages, in English, detailing the methods, themes, patterns and findings from the interviews, with connections to other study data where appropriate, sufficient to write the findings for a scientific paper	January 15, 2027

In addition, the consultant is expected to submit:

- **Monthly Progress Reports**
Emails summarizing progress on project activities, stakeholder engagement, key achievements, challenges, and next steps.
- **End-of-Contract Report**
A brief report outlining activities completed, key results achieved, lessons learned, and recommendations for any next steps.

GENDER

Nutrition International is committed to gender equality. Consultants are required to indicate how they will ensure that gender equality considerations are included in the provision of TA, including how they are incorporated into deliverables. Examples of gender equality integration could include but are not limited to; ensuring government



departments responsible for women are included wherever possible, gender sensitive indicators are included, emerging data is sex disaggregated, and relevant documentation related to gender is reviewed. Nutrition International's gender equality strategy as well as tools to support gender mainstreaming can be accessed here: [Program Gender Equality Strategy](#).

TIMELINE

The consultancy will be conducted over a maximum of 42 working days between August 2026 and January 2027, with an estimated level of effort of approximately seven (7) days per month.

STATION / LOCATION

The Research Specialist will be home-based and will require easy access for day-to-day working to both Dar es Salaam and Dodoma. There will be some local travel (within Tanzania) required during the assignment. Local travel under this consultancy will be supported by Nutrition International based on prior approval by NI team. Travel allowance will be based on the standard rates of the Nutrition International.

MANAGEMENT AND REPORTING/COORDINATION MECHANISM

The Research Specialist will report to the Global Governance Advisor, Nutrition Governance. S/He will work closely with the Nutrition International Country Office and other units at NI HQ as may be needed. S/He will work with and provide technical support to the National Facilitator responsible for the NN-LTP development, and coordinate with the TFNC for technical guidance and feedback.

PROFILE/ QUALIFICATIONS OF CONSULTANT

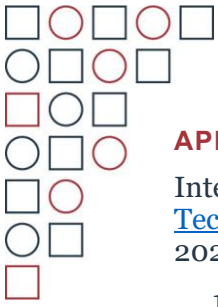
The Consultant should have the following profile:

Required

- Demonstrated primary qualitative social/policy research skills, and ability to apply these independently
- PhD (or MSc plus significant demonstrated qualitative research experience) in public policy, political science, social science or a related field
- Fluent in English and Swahili languages, able to speak and write in technical and scientific language in both
- Tanzanian national

Desirable

- Demonstrated knowledge and experience of public policy research and theory
- Previous academic publications in a relevant field
- Knowledge of nutrition policy and programming in Tanzania
- Existing networks in Tanzanian nutrition policy



APPLICATION PROCESS

Interested Consultants are invited to submit the following by email to TechnicalAssistance@NutritionIntl.org , copying bjack@NutritionIntl.org by July 15, 2026 23:59pm in Ottawa.

1. Up-to-date curriculum vitae or resume.
2. Cover Letter/ Suitability statement for the consultancy.

Additionally, applicants are expected to complete the [Technical Assistance Provider Recruitment Form - Nutrition International \(nutritionintl.org\)](#).

* The award of this Consultancy contract will be contingent on project funding availability.