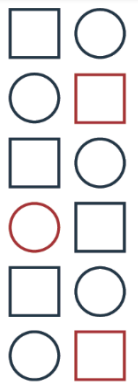


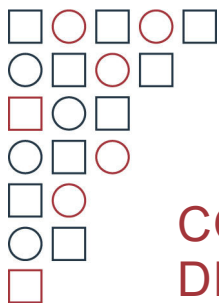
Expression of Interest No: 06-09-2024

## Country landscape analysis of the drivers of child stunting

---

**Deadline for receipt of submissions:  
September 30 2024 at 11.59pm Ottawa (EST) time**





# COUNTRY LANDSCAPE ANALYSIS OF THE DRIVERS OF CHILD STUNTING

## TERMS OF REFERENCE

Nutrition International is recruiting an individual Consultant, team of Consultants or Firm to perform the duties specified in this ToR. Nutrition International is committed to the fundamental principles of equal employment opportunity. Women are encouraged to apply.

## BACKGROUND AND RATIONALE

Globally, stunting among children under 5 years of age is one of the most significant impediments to human development. It has long-term consequences, including increased risk of reduced cognitive development, poor school performance, reduced earnings as adults, and increased incidence of Non-Communicable Diseases (NCDs) later in life. The World Health Assembly has developed a target to reduce childhood stunting among under-fives by 40% by 2025. Addressing stunting has therefore been one of the highest priorities for many countries, especially those where stunting rates are very high.

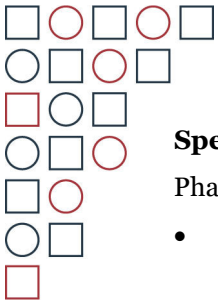
Governments in various countries are taking concrete measures in policy, and to turn policy into action. Development partners are actively supporting both nutrition-specific and nutrition-sensitive programs and interventions. However, while partial analyses often exist, an in-depth analysis and multi-disciplinary investigative study of the major drivers of high rates of child stunting has not yet been undertaken in many cases.

This Landscape Analysis will provide an evidence base that can be used to inform the allocation of Government budgets and partner investments for addressing child stunting across key sectors, for maximum effectiveness and impact. *A series of Landscape Analysis studies over the next few years will support individual Governments in Asia and Africa in countries with high rates and/or burdens of child stunting in taking forward their national nutrition action plans or stunting reduction plans, with analysis that helps in identifying and prioritizing critical evidence-based interventions and actions, in order to respond directly to the key drivers of child stunting identified among specific socio-economic, regional or other population segments.*

## OBJECTIVES OF THIS CONSULTANCY

### Overall Objective

To provide as comprehensive a picture as possible of the main drivers of high rates of young child stunting in each country, drawing on available research-based literature and quantitative and qualitative information, and to use this to inform decision-making on prioritized investments and actions to address the challenge.



## Specific Objectives

### Phase One:

- Identify the immediate, intermediate, underlying, and fundamental drivers of high rates of young child stunting in the country, disaggregated by geographic, demographic, socio-economic, and family characteristics, and considering gender-related factors, based on the conceptual framework, desk review, and key informant interviews.

### Phase Two:

- Complement the preliminary findings from the desk review and key informant interviews with formative field research, including focus group discussions with community members, parents, caregivers, and service users, in a subsequent phase of the Landscape Analysis.
- Share findings with governments and partners to refine national decision-making on child stunting interventions, enhance the implementation of existing multisectoral strategies, and inform the design of additional measures

## SCOPE OF WORK

- The consultancy will use the UN/UNICEF conceptual framework for nutritional outcomes to guide its analysis, considering various levels of causality and available data on potential drivers.
- The consultancy will align with national nutrition policies and relevant sectoral documents (e.g., Health, WASH, Education, Social Protection) to support the effective implementation of a balanced mix of nutrition-specific and nutrition-sensitive interventions to address the drivers of stunting.

## GENDER

Nutrition International is committed to gender equality. Consultants are required to indicate how they will ensure that gender equality considerations are included in the provision of TA, including how they are incorporated into deliverables. Examples of gender equality integration could include but are not limited to; ensuring government departments responsible for women are included wherever possible, gender sensitive indicators are included, emerging data is sex disaggregated, and relevant documentation related to gender is reviewed. Nutrition International's gender equality strategy as well as tools to support gender mainstreaming can be accessed here: [Program Gender Equality Strategy](#).

## TIMELINE

The consultancy will be between October 2024 and March 2025. Extension of contract may be subject to the successful delivery of this TA and budget availability.

## PROFILE/ QUALIFICATIONS OF CONSULTANT

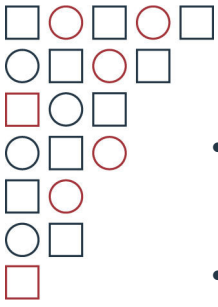
The consultant or proposed consultancy team should have the following profile:

### Education:

1. Post-graduate qualifications in social development, health, nutrition, sociology and/or development economics.

### Experience:

- At least 8 years successful working experience in relevant fields at an international expert level.



- Demonstrated experience in producing assessment and analysis of nutrition challenges and their causes, particularly in developing country settings and preferably covering issues of child stunting/undernutrition.
- Demonstrated ability to conduct both quantitative and qualitative research, including at community level in low-income settings, and in applying analytical approaches to human development issues.
- Demonstrated ability to apply gender equality principles to problem analysis and practical development situations.
- Demonstrated ability to provide clear, detailed and practical recommendations to Governments through written reports and well-communicated presentations.
- Substantial experience in working at national and international levels with Governments on nutrition policy issues on a multi-sectoral basis.

#### **Language Skills:**

- Fluency in written and spoken English is mandatory.
- Other languages, including French and Portuguese, may be considered an advantage.

#### **APPLICATION PROCESS**

Interested consultants or consultancy teams are invited to submit the following by email to [TechnicalAssistance@NutritionIntl.org](mailto:TechnicalAssistance@NutritionIntl.org), copying [rmorgan@NutritionIntl.org](mailto:rmorgan@NutritionIntl.org) before September 30, 2024, 11:59pm, Eastern Standard Time (Ottawa time)

1. Include in your email subject the title of the consultancy
2. Up-to-date curriculum vitae or resume, including referees
3. A detailed Letter of Expression of Interest, setting out the range of experience to be provided in response to the criteria set out above, and the methodological approach for a Drivers of Child Stunting Landscape Analysis that is proposed
4. Specify the countries or regions where you can provide this consultancy service.
5. Additionally, applicants are expected to complete the [Technical Assistance Consultant Recruitment Form](#)

NB: Nutrition International is committed to the fundamental principles of equal employment opportunity. Women are encouraged to apply.